

ASIA PACIFIC NEUROCRITICAL CARE CONFERENCE 2026

STRENGTH THROUGH DIVERSITY

3 - 5 JULY 2026 | ST. GILES WEMBLEY HOTEL, PENANG, MALAYSIA



Jointly by



In collaboration with

NEUROCRITICAL
CARE SOCIETY



Managed by



www.neuro-criticalcare.org



ASIA PACIFIC NEUROCRITICAL CARE CONFERENCE 2026 STRENGTH THROUGH DIVERSITY

There is a growing need to meet the increasing demand for the care of critically ill patients with neurological and neurosurgical conditions. To our knowledge, the Asia Pacific Neurocritical Care Conference (APNCC) 2026 is the only conference in Malaysia—and possibly in the region—fully dedicated to neurocritical care for both adult and paediatric populations.

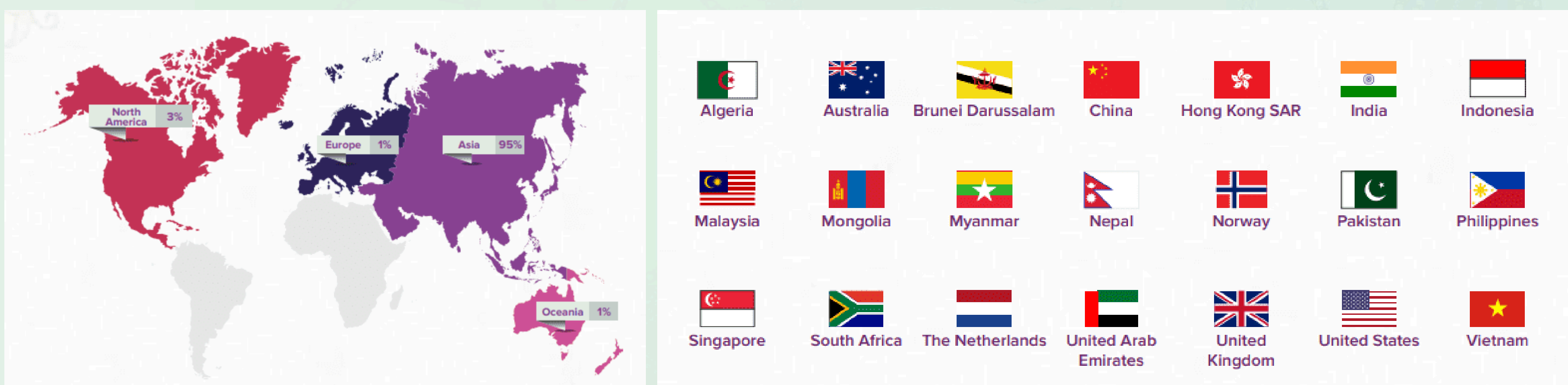
As such, APNCC 2026 is thoughtfully crafted with topics related to current and emerging trends in neurocritical care. To achieve this, the conference has brought together local experts and internationally renowned speakers on this platform to share their knowledge and experiences.

The conference has also partnered with local and regional biomedical industries to showcase the latest products and services relevant to neurocritical care and beneficial to patients with neurological conditions.

Hence, healthcare providers from multiple disciplines, neuroscience researchers, and policymakers involved in neurocritical care can congregate to learn, share, and establish networks with one another.

PAST EDITION: APNCC 2024

28 – 30 June 2024, Borneo Convention Centre Kuching, Sarawak



WHO SHOULD ATTEND?

- Adult Intensive Care Medicine
- Anaesthesiology
- Emergency Medicine
- Internal Medicine
- Neuroanaesthesiology
- Neurocritical Care
- Neurology
- Paediatric Intensive Care Medicine
- Paediatric Neurology
- Paediatrics



APNCC: Follow us on our official Social Media Accounts to get the latest news



WELCOME MESSAGES

FROM THE ORGANISING CHAIRS

Dear Friends and Colleagues,

On behalf of the Organising Committee, we are pleased to invite you to the Asia Pacific Neurocritical Care Conference (APNCC) 2026, which will be held from 3 – 5 July 2026 at the St. Giles Wembley Hotel in Penang, Malaysia. This event is proudly organised by the Malaysian Society of Neuroanaesthesiology and Neurocritical Care (MSNACC), in collaboration with the Neurocritical Care Society (NCS) and the Pediatric Acute & Critical Care Medicine Asian Network (PACCMAN).

Building on the success of the Asia Pacific Neurocritical Care Conference (APNCC) 2024, which took place from 28 – 30 June 2024 and welcomed over 400 attendees from more than 21 countries, we are delighted to announce the return of this premier event in 2026. APNCC 2026 will remain the only conference in Malaysia—and possibly the region—fully dedicated to both adult and paediatric neurocritical care.

By fostering knowledge exchange and collaboration among local and international multidisciplinary professionals, the conference aims to advance the care of patients facing life-threatening neurological and neurosurgical conditions. Ultimately, our shared goal is to improve outcomes for both adult and paediatric patients in neurocritical care settings.

We look forward to welcoming you to what promises to be a rewarding and enriching experience. While you are here, we also encourage you to explore the vibrant sights, sounds, and flavours of Penang. As a UNESCO World Heritage Site, Penang offers a rich blend of history, culture, and architecture—from charming colonial-era buildings and centuries-old temples to bustling heritage streets. There is truly something for everyone in this remarkable destination.

We look forward to seeing you in Penang in July 2026.

Dr Pon Kah Min

Consultant Paediatric Intensivist
Penang Hospital, Malaysia

Assoc Prof Dr Cheah Saw Kian

Consultant Anaesthesiologist & Intensivist
Hospital Canselor Tuanku Muhriz
Universiti Kebangsaan Malaysia, Malaysia



**ASIA PACIFIC
NEUROCRITICAL CARE
CONFERENCE 2026**
STRENGTH THROUGH DIVERSITY

WELCOME MESSAGES

FROM THE SCIENTIFIC CHAIR

Dear Colleagues,

As the Scientific Chairperson for the Asia Pacific Neurocritical Care Conference (APNCC) 2026, I am pleased to invite you to join us in Penang, Malaysia, from 3 – 5 July 2026.

The Scientific Committee for this third edition of the APNCC is developing a programme that offers a strong balance of cutting-edge, thought-provoking, and clinically relevant topics.

We are proud to present some of the world's leaders in adult and paediatric neurocritical care, who will be joining us from across the Asia-Pacific, Europe, and North America regions.

Nestled in the heart of Georgetown, APNCC 2026 will offer a unique opportunity to explore the rich heritage of this enchanting city while delving into the latest advancements in neurocritical care.

See you in Penang!



Assoc Prof Lee Jan Hau
Deputy Chairperson Pediatric Acute & Critical Care
Medicine Asian Network
Senior Consultant Paediatric Intensivist
KK Women's and Children's Hospital, Singapore

ORGANISING SOCIETY



MALAYSIAN SOCIETY OF NEUROANAESTHESIOLOGY AND NEUROCRITICAL CARE(MSNACC)

There is an emerging number of anaesthesiologists with special interest in perioperative neurosciences from public, private and university hospitals in Malaysia. This subsequently catalysed the formation of Malaysian Society of Neuroanaesthesiology and Neurocritical Care (MSNACC) on 28 May 2021. The MSNACC is a non-profitable and self-generating professional body. Through its small but growing number of members, MSNACC aims to facilitate educational activities via formal attachments, workshops, international and national conferences, all for the betterment of perioperative neuroscience in Malaysia.

In keeping with MSNACC's tagline, '**MSNACC: Promoting Excellence in Perioperative Neuroscience and Beyond**', the Society is committed in delivering high quality continuous professional activities not limited to neuroanaesthesia and neurocritical care. These areas include airway management, anaesthesia for patients living with obesity, total intravenous anaesthesia, patient safety, healthcare risk management and education in medico-legal and medical ethics which are essential to all anaesthetic providers.



COLLABORATING SOCIETIES

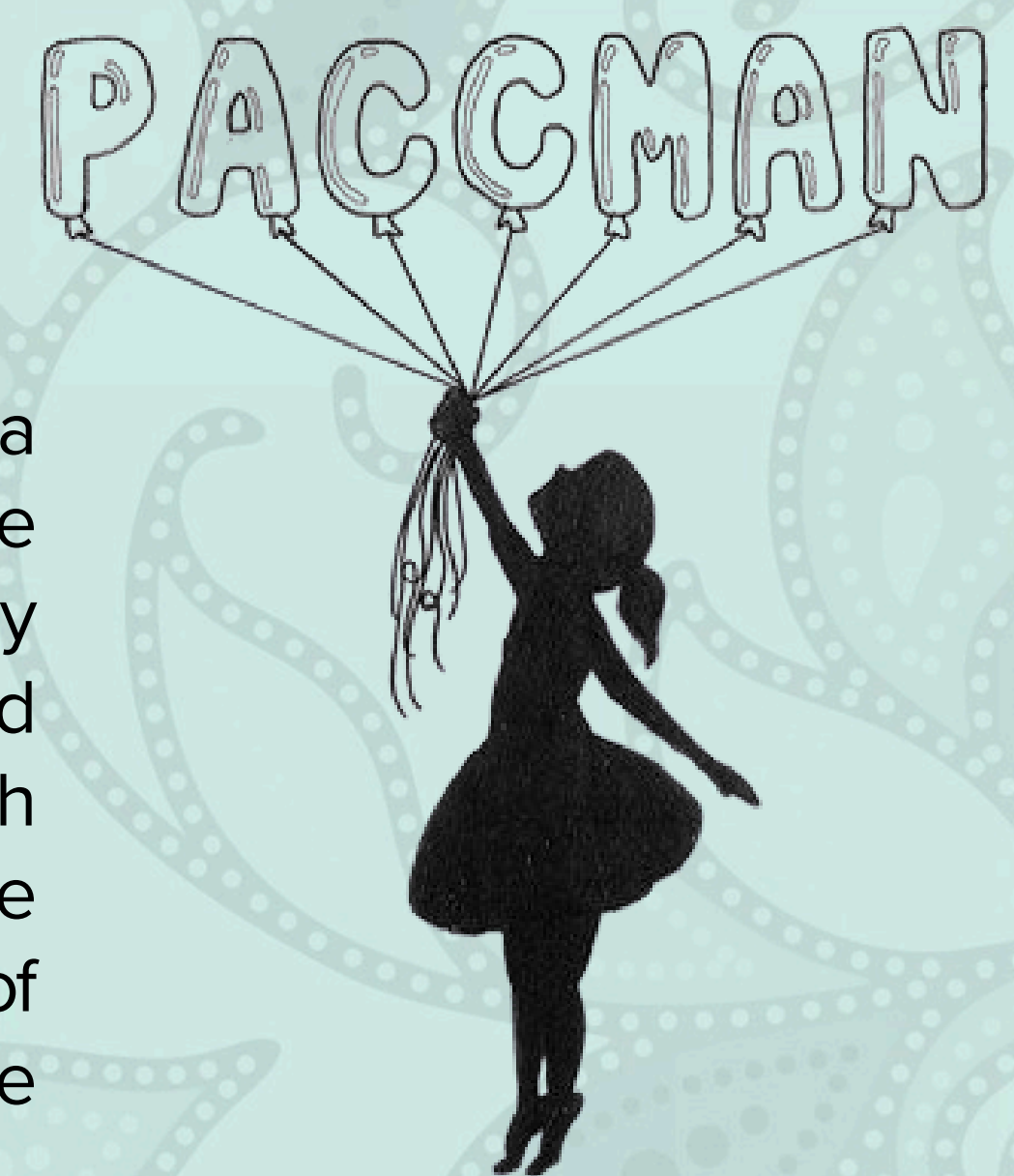
NEUR  CRITICAL
CARE SOCIETY

NEUROCRITICAL CARE
SOCIETY (NCS)

The **Neurocritical Care Society (NCS)** is proud to be the only professional society representing multi-disciplinary teams of neurocritical care providers around the world whose mission is to improve outcomes for patients with life-threatening neurological illnesses.

PEDIATRIC ACUTE & CRITICAL CARE
MEDICINE ASIAN NETWORK (PACCMAN)

The Pediatric Acute & Critical Care Medicine Asian Network (PACCMAN) is a collaborative research network formed in 2015 by pediatric intensive care providers. Currently, pediatric intensive care research is inadequate and poorly coordinated in Asia due to variations in clinical practice, institutional systems and resources. With conditions like sepsis, ARDS and myocarditis which carry high mortality rates, the scarcity of trends and research in this area underscores the need for collaboration and good quality interventional trials. The primary aim of PACCMAN is to promote collaboration by bringing together individuals to share experience and develop best practices for this diverse region.





ORGANISING COMMITTEE

Organising Chairpersons

Assoc Prof Dr Cheah Saw Kian

Consultant Anaesthesiologist & Intensivist
Hospital Canselor Tuanku Muhriz
Universiti Kebangsaan Malaysia, Malaysia

Dr Pon Kah Min

Consultant Paediatric Intensivist
Penang Hospital, Malaysia

Scientific Chair

Assoc Prof Lee Jan Hau

Deputy Chairperson
Pediatric Acute & Critical Care Medicine Asian Network
Senior Consultant Paediatric Intensivist
KK Women's and Children's Hospital, Singapore

Scientific Committee Members for Adult Track

Prof Dr Jose I Suarez

The Johns Hopkins University School of Medicine, United States

Prof Dr Will Loh

National University Hospital, Singapore

Professor Sarah L. Livesay

Rush University College of Nursing, United States

Assoc Prof Dr Cheah Saw Kian

National University of Malaysia, Malaysia

Dr Peter Tan

Miri Hospital, Malaysia

Scientific Committee Members for Paediatric Track

Dr Chor Yek Kee

Sarawak General Hospital, Malaysia

Dr Pon Kah Min

Penang Hospital, Malaysia

Dr Olive Lee

Sunway Medical Centre, Kuala Lumpur, Malaysia



APNCC: Follow us on our official Social Media Accounts to get the latest news

GENERAL INFORMATION

Date 3 – 5 July 2026 (Friday – Sunday)

Venue St. Giles Wembley Hotel, Penang, Malaysia
183, Jalan Magazine, 10300 George Town, Penang, Malaysia

Official Language The official language of the conference is English.

Wi-Fi Access Complimentary Wi-Fi is available throughout the venue.

Weather & Attire Penang in July is typically warm and humid, with average temperatures between 25°C and 31°C. Smart casual attire is recommended for the scientific sessions.

Time Zone Malaysia Standard Time (GMT+8)

Currency The local currency is the Malaysian Ringgit (MYR). Major credit cards are widely accepted.

Conference Managed by Kenes MP Asia Pte Ltd
20 Kallang Avenue, PICO Creative Centre Level 2
Singapore 339411
info@neuro-criticalcare.org

Exhibition and Support Ms Jenny Ong
Director
ongj@kenes.com



CONFERENCE VENUE

ABOUT PENANG

Penang, fondly known as the “Pearl of the Orient,” is a captivating destination that seamlessly blends history, culture, and modern living. Its capital, George Town, is a UNESCO World Heritage Site, celebrated for its beautifully preserved colonial architecture, vibrant street art, and a rich multicultural fabric shaped by Malay, Chinese, Indian, and Peranakan influences. The city is alive with festivals, museums, temples, and historic enclaves that showcase Penang’s timeless charm and cultural diversity.

Beyond its urban heritage, Penang is equally admired for its natural beauty and leisure offerings. From lush tropical hills and scenic hiking trails to sandy beaches and tranquil gardens, the island caters to both adventure seekers and those looking for a slower pace of discovery. Renowned as Malaysia’s food capital, Penang is a paradise for culinary enthusiasts, offering an endless variety of hawker fare, traditional delicacies, and modern dining experiences that make every visit unforgettable.



ABOUT ST. GILES WEMBLEY HOTEL, PENANG

St. Giles Wembley Hotel was chosen for its central location in George Town, offering delegates easy access to the conference facilities as well as the city’s heritage sites, shopping districts, and dining options. With its close proximity to major transport links, arrival and departure are convenient for both local and international attendees. Combined with comfortable accommodations, leisure amenities, and nearby conveniences, the hotel provides a well-connected and welcoming base for delegates to participate, network, and enjoy all that Penang has to offer during the conference.

HOW TO GET THERE

By Private Transportation (Car/Taxi/Grab)

From Penang International Airport:

Approximately 17 - 20 minutes by car (about 17 km), depending on traffic

From North–South Expressway:

After exiting the highway, the hotel is around a 5-minute drive from the Penang Ferry Terminal

From Penang Ferry Terminal:

Just a 5-minute drive to the St. Giles Wembley Hotel

Terminal Komtar:

Buses available: 204, 301, 302, 401, 401E

By Public Transportation

Ferry Terminal:

On the island side, Pangkalan Raja Tun Uda is connected to the Pangkalan Sultan Abdul Halim Ferry Terminal on the mainland. From there, the hotel is either within walking distance or just a short ride away



CONFERENCE REGISTRATION

Local Registration Category	Early Bird (MYR) 10 Sep 2025 – 10 Apr 2026	Regular (MYR) 11 Apr 2026 – 30 Jun 2026	Onsite (MYR) 1 Jul 2026 Onwards
Doctor (Specialist)	750	900	1,100
Doctor (Medical Officer)	600	750	950
Allied Health Professional	450	600	750
Medical/Nursing Student	300	400	400

International Registration Category	Early Bird (USD) 10 Sep 2025 – 10 Apr 2026	Regular (USD) 11 Apr 2026 – 30 Jun 2026	Onsite (USD) 1 Jul 2026 Onwards
International	400	550	550
Low- & Low-Middle Income Countries	250	350	350

World Bank Classification on [Low-and Middle-Income Countries, Upper-Middle-Income Countries, Low-Income Countries](#)

Note:

- All prices quoted in MYR & USD and are subjected to prevailing rates of Goods and Services Tax.
- Your ticket type determines your access to the Conference (3 – 5 July 2026).
- Registration fees include light refreshments during breaks as indicated in the programme.
- Registration will only be valid upon receipt of the full payment by the registration department according to the deadline indicated.
- An email confirming registration will only be sent after receipt of the required fees.

More information: www.neuro-criticalcare.org/registration



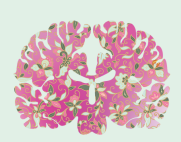


**ASIA PACIFIC
NEUROCRITICAL CARE
CONFERENCE 2026**
STRENGTH THROUGH DIVERSITY

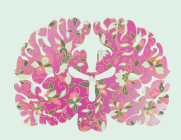
ABSTRACT THEMES



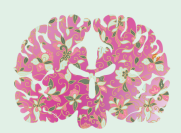
Acute Inflammatory Central Nervous System Conditions and Neuromuscular Disorders



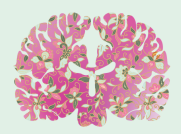
Artificial Intelligence in Neurocritical Care



Brain–Multiorgan Crosstalk



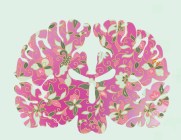
Cardiac Arrest and Brain Death



Central Nervous System Infections



Epilepsy



Multimodal Neuromonitoring



Neurocritical Care Nursing



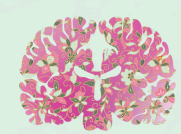
Neurocritical Care Pharmacotherapy



Neurorehabilitation



Paediatric Neurocritical Care and Postoperative Care of Paediatric Neurosurgical Patients



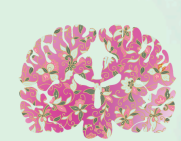
Perioperative Brain Health



Point-of-Care Ultrasound in Neurocritical Care



Research, Quality and Safety in Neurocritical Care



Role of Paediatric and Adult Intensive Care Unit Liberation and Delirium Surveillance



Stroke and Aneurysmal Subarachnoid Haemorrhage



Traumatic Brain and Spinal Injury



LEARN MORE

ENQUIRIES

APNCC 2026 Abstract Department

E-mail: abstract@neuro-criticalcare.org



APNCC: Follow us on our official Social Media Accounts to get the latest news



MAIN PROGRAMME

3 July 2026, Friday Day 1, Main Conference		
Time/Room	Adult NCC	Paediatric NCC
	Wembley Ballroom 1	Wembley Ballroom 2
0730 onwards	Registration	
0825 – 0830	Welcome Address by APNCC 2026 Organising Chairperson Cheah Saw Kian (Malaysia)	Welcome Address by APNCC 2026 Organising Chairperson Pon Kah Min (Malaysia)
0830 – 0905	Plenary 1 – Neurocritical Care Literature 2025–2026	Plenary 2 – When the Heart Restarts, What About the Brain?
0905 – 0940	Plenary 3 – Innovations in Neurocritical Care for Low-Middle Resource Settings	Plenary 4 – Shaken, Struck, and Shattered: Advances in Traumatic Brain Injury and Spinal Injury
0940 – 1015	Coffee/Tea Break, Exhibition & Poster Viewing	
1015 – 1130	Symposium 1 – Neuromonitoring	Symposium 2 – Crises at the Neuro-Critical Edge
1015 – 1035	Non-invasive Intracranial Pressure Monitoring and Management	Brains on Fire: The Storm in the Brain: Acute Inflammatory CNS Disorders
1035 – 1055	Multimodality Neuromonitoring in Resource-Constraint Environments	Invisible Invaders: CNS infections in PICU
1055 – 1115	Multimodality Neuromonitoring: More Is Better	Little Strokes, Big Impact: Stroke and Aneurysmal SAH in Children
1115 – 1130	Q&A	Q&A
1130 – 1215	Wembley Ballroom 1 Satellite Lunch Symposium	
1215 – 1400	Friday Prayer Lunch, Exhibition & Poster Viewing	
1400 – 1515	Oral Presentations	Poster Presentations
1515 – 1545	Coffee/Tea Break, Exhibition & Poster Viewing	
1545 – 1700	Symposium 3 – Infections in Neurocritical Care	Symposium 4 – Trauma, Resuscitation and Brain Protection
1545 – 1605	Sepsis Biomarkers in Neurocritical Care	After the Silence: Optimising Post-Cardiac Arrest
1605 – 1625	Timing of Antibiotics in Neuro-ICU Sepsis: How Fast Is Fast Enough?	Balancing the Tides: Balancing Oxygen, Perfusion & Neuroprotection
1625 – 1645	Sepsis in Neurocritical Care: Impact on Neurologic Outcomes	Chilling the Fire: Cooling Therapy in Cardiac Arrest Care
1645 – 1700	Q&A	Q&A
End of Day 1		

The programme is accurate as of the time of publication (9 September 2025).
It is subject to change at the discretion of the Organising Committee without prior notice.

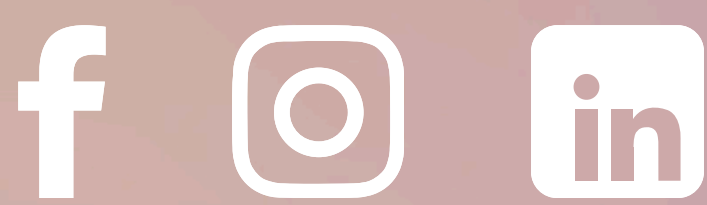




MAIN PROGRAMME

4 July 2026, Saturday Day 2, Main Conference		
Time/Room	Adult NCC	Paediatric NCC
	Wembley Ballroom 1	Wembley Ballroom 2
0730 onwards	Registration	
0800 – 0835	Plenary 5 – Ventilatory Management in Severe Brain Injuries	Plenary 6 – When AI Meets PICU: AI and Predictive Analytics in Neurocritical Care
0835 – 0950	Symposium 5 – Intracranial Haemorrhage-ICH	Symposium 6 – Smarter Care Through Tech & Monitoring: Precision, Technology & Intervention
0835 – 0855	Bundles of Care for ICH Patients	Looking Deeper: Multimodal Neuromonitoring in Action
0855 – 0915	Blood Pressure Management in ICH: Is Time to Individualise?	Stethoscope of the Future: Point-of-Care Ultrasound-Expanding the Neurocritical Toolbox
0915 – 0935	Variance of Care of ICH around the World	Signals from the Blood, Beyond the Numbers: Biomarkers & Novel Diagnostics in Neurocritical Care
0935 – 0950	Q&A	Q&A
0950 – 1030	Coffee/Tea Break, Exhibition & Poster Viewing	
1030 – 1105	Plenary 7 – Artificial Intelligence in Neurocritical Care	Plenary 8 – The Brain’s Ripple: Domino Effect. How Brain and Organs Drive Each Other
1105 – 1215	Symposium 7 – Aneurysmal Subarachnoid Haemorrhage- aSAH	Symposium 8 – Organ crosstalks in Neurocritical Illness
1105 – 1125	Taming the Spasm: Decision-Making in Vasospasm aSAH	The Gut Feeling: Nutrition in Neurocritical Care. Early vs Cautious
1125 – 1145	Navigating Competing Priorities in aSAH Management	The Breathless Brain: Neurological Consequences of Respiratory Failure
1145 – 1205	Management of aSAH Post-guideline Publication	Cortisol Chaos: The Neuroendocrine Storm After Cardiac Arrest
1205 – 1215	Q&A	Q&A
1215 – 1300	Wembley Ballroom 1 Satellite Lunch Symposium	
1300 – 1415	Lunch, Exhibition & Poster Viewing	
1415 – 1530	Symposium 9 – Traumatic Brain Injury- TBI	Symposium 10 – From Survival to Meaningful Recovery: Recovery, Ethics & Future of Paediatric Neurocritical Care
1415 – 1435	What Should the General Intensive Care Providers Know About Caring for Severe TBI Patients?	After the Knife: Postoperative Care of Neurosurgical Patients
1435 – 1455	Why Nursing Care is Paramount in the Critical Care of TBI Patients	The Brain Fog: Does Long COVID Brain Fog Exist in Children?
1455 – 1515	Advancing TBI Care: Gaps, Challenges and Opportunities	Too Deep, Too Light or Just Right: Sedation in Neurocritical Care
1515 – 1530	Q&A	Q&A
1530 – 1600	Coffee/Tea Break, Exhibition & Poster Viewing	
1600 – 1700	Symposium 11 – Neurocritical Care Training and Certification	Symposium 12 – Humanising Neurocritical Care: Where Do We Go from Here
1600 – 1625	The United States Model	Freeing the Brain: Liberation & Delirium Surveillance Across Ages
1625 – 1650	The Singapore Model	At the Bedside: Neurocritical Care Nursing—Expanding Roles & Impact
1650 – 1700	Q&A	Q&A
1930 – 2130	APNCC 2026 Faculty Dinner in Conjunction with the Asian Society for Neuroanesthesiology & Critical Care Welcome Reception (By Invitation)	
End of Day 2		

The programme is accurate as of the time of publication (9 September 2025).
It is subject to change at the discretion of the Organising Committee without prior notice.



MAIN PROGRAMME

5 July 2026, Sunday Day 3, Main Conference		
Time/Room	Adult NCC	Paediatric NCC
	Wembley Ballroom 1	Wembley Ballroom 2
0730 onwards	Registration	
0830 – 0905	Plenary 9 – Neuroprognostication in the Neurocritical Care Unit	Plenary 10 – The Broken Thermostat: Disorders of Salt and Water in Neurocritical Care
0905 – 1000	Symposium 13 – Brain Death	Symposium 14 – Hormones on Fire
0905 – 0925	Determination of Death by Neurological Criteria: Is There a Global Understanding?	Sugar Highs and Lows: Glycemic Control and Brain Injury Outcomes
0925 – 0950	Brain Death: Challenges in the Malaysian’s Perspectives	Thyroid Storms in PICU: Thyroid Emergencies in NeuroICU
0950 – 1000	Q&A	Q&A
1000 – 1030	Coffee/Tea Break, Exhibition & Poster Viewing	
1030 – 1105	Plenary 11 – Curing Coma Campaign	Plenary 10 – Seizing the Moment: Management of Refractory Seizures in PICU
1105 – 1215	Symposium 15 – Communication with Families of Patients with Severe Acute Brain Injury	Symposium 16 – Debates and Hot Topics: Controversies in Paediatric Neurocritical Care
1105 – 1125	How are Family Meetings Organised in Malaysia?	Too Soon vs Too Late: Withdrawal of Care Decisions—Prognostications in Severe Brain Insult
1125 – 1145	Shared-decision Making in the Neurocritical Care Unit	Global Disparities: Delivering Neurocritical Care in Low-Resource Settings
1145 – 1205	Is There a Best Model of Family–Clinician Interaction?	Psychedelics & Novel Neurotherapuetics: Future in Paediatric Brain Recovery?
1205 – 1215	Q&A	Q&A
1215 – 1230	Award Presentations & Closing Ceremony	
Adjourn		

The programme is accurate as of the time of publication (9 September 2025).
It is subject to change at the discretion of the Organising Committee without prior notice.

